



REEM HILLS NEW PHASE

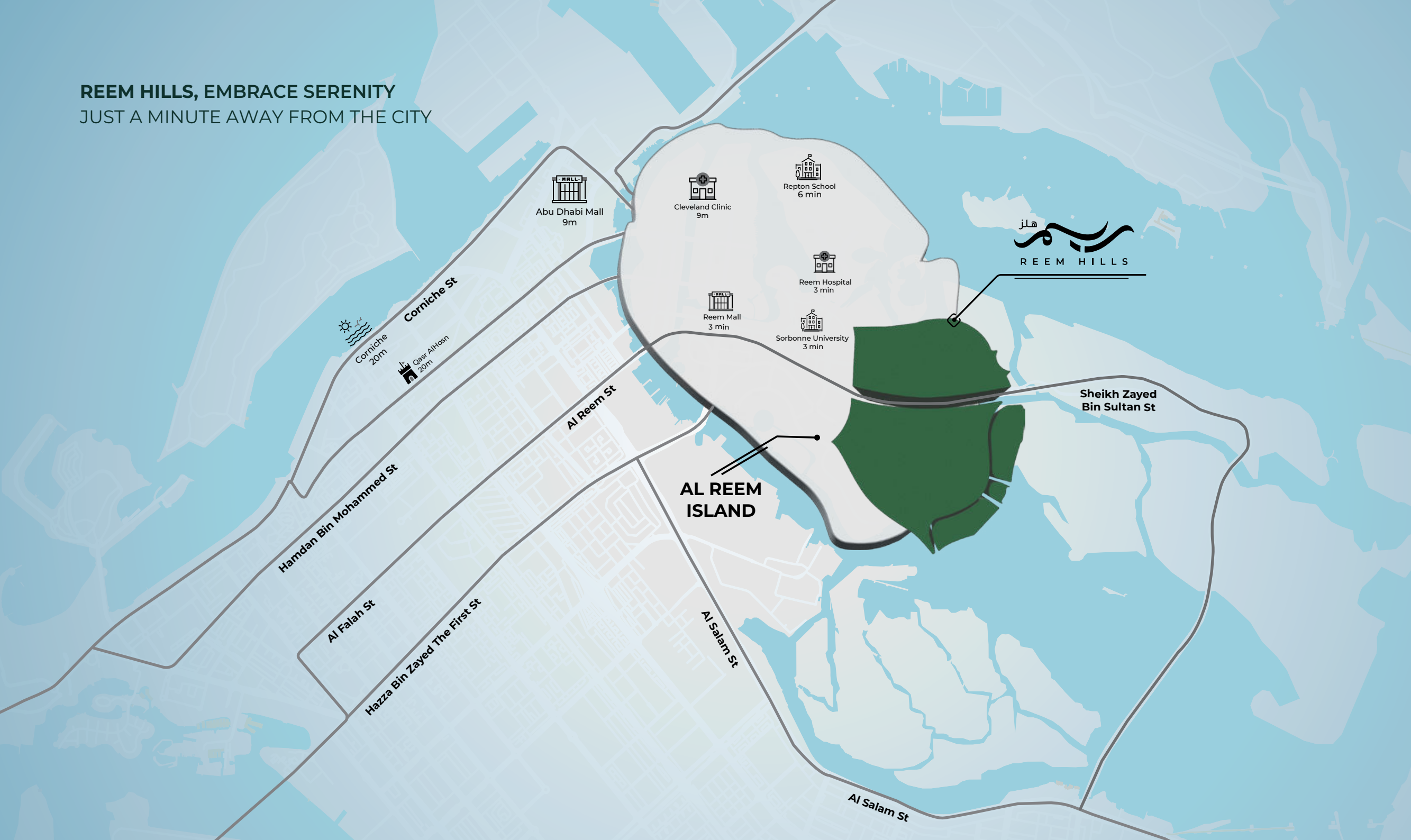


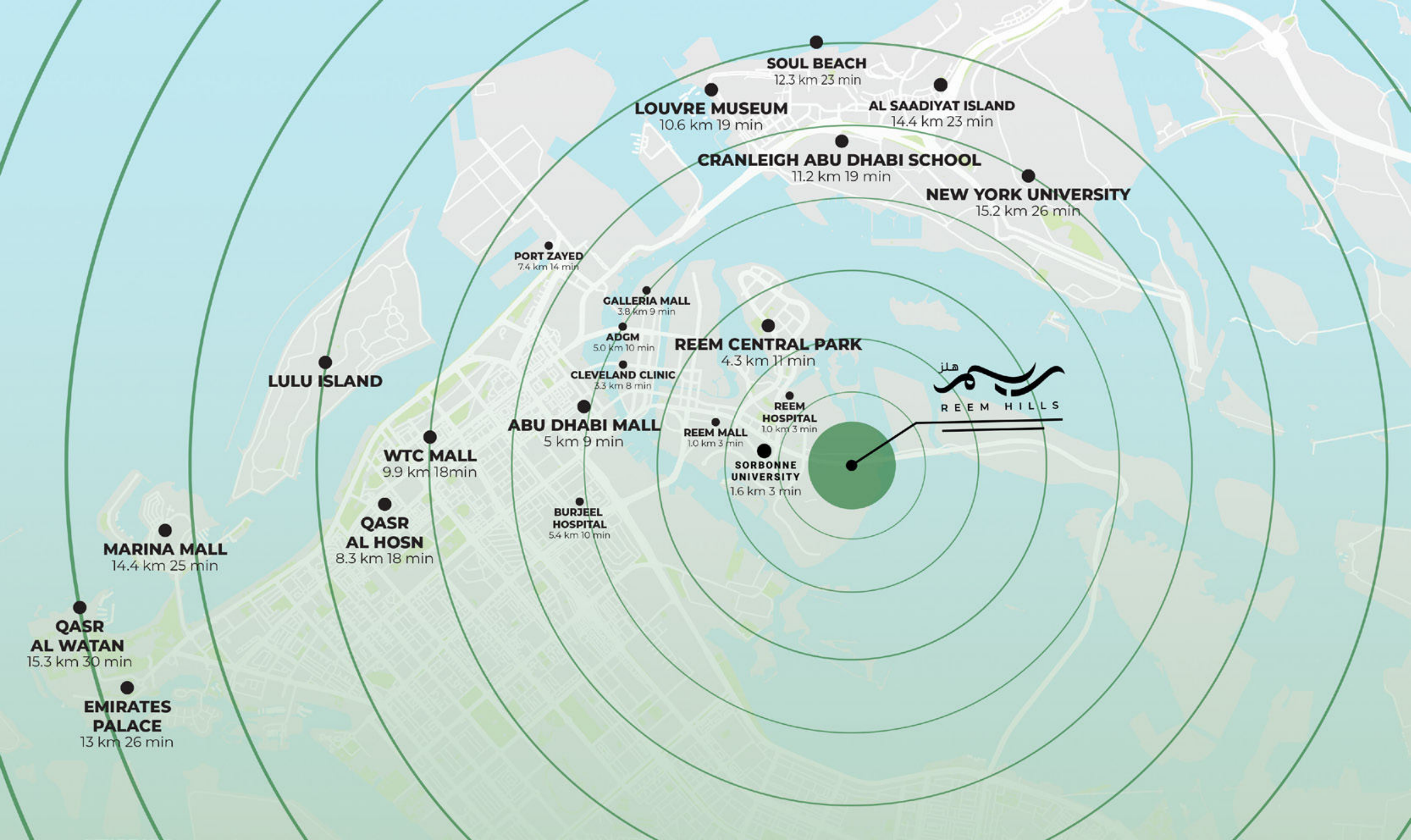
# PEAK LIVING IN THE HEART OF THE CAPITAL





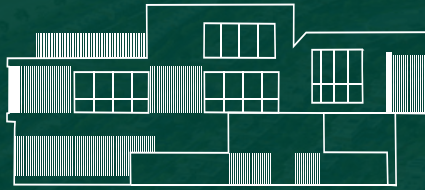
**REEM HILLS, EMBRACE SERENITY**  
JUST A MINUTE AWAY FROM THE CITY



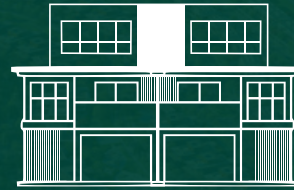




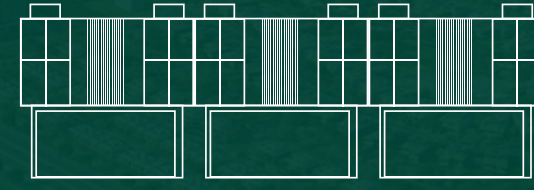
# REEM HILLS IS THE BEGINNING OF EVERYTHING BEAUTIFUL



**VILLAS**  
4 TO 7 BEDROOM



**TWIN VILLAS**  
4 BEDROOM



**TOWNHOUSES**  
3 BEDROOM

- An unparalleled first-gated community in the heart of the capital
- Expansive spaces
- Variety of designs & layouts
- Competitive prices
- Dominating proximity to the convenience of the capital
- Luxury and serenity in the heart of the capital



STEP INTO A WORLD OF OPULENT  
COMFORT, TRANQUILLITY AND LUXURY





ENJOY THE BEAUTY OF NATURE
















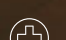

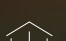


A LIFESTYLE THAT BRINGS YOU  
MORE HAPPINESS AND COMFORT









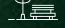


# FACILITIES AND BENEFITS AT YOUR DOORSTEP

## AMENITIES & RECREATIONAL AREAS

- |   |  |
|---|--|
|  GATED COMMUNITY        |  SANDY BEACHES             |
|  PRIVATE SCHOOL        |  CANAL PROMENADE          |
|  COMMUNITY CENTRE      |  RESTAURANTS & CAFES      |
|  EARLY LEARNING CENTRE |  MEDICAL SERVICES         |
|  MOSQUES               |  CLUBHOUSES               |
|  RETAIL                |  JOGGING & CYCLING TRACKS |

## PARKS

- |   |
|---|
|  NEIGHBORHOOD PARK                |
|  LINEAR PARK                     |
|  POCKET PARK                     |
|  LANDSCAPED HILL                 |
|  COMMUNITY PARKS & PLAYING AREAS |
|  SPORTS COURTS                   |
|  SHADED SEATING AREAS            |























THE NEW PHASE.. A PERFECT COMBINATION  
OF LUXURY & SPACIOUSNESS











PARK VALLEY

NORTH BAY

GARDEN HOMES

COAST WAY

BEACH BAY





CHOOSE YOUR HOME OF LUXURY & SPACIOUSNESS



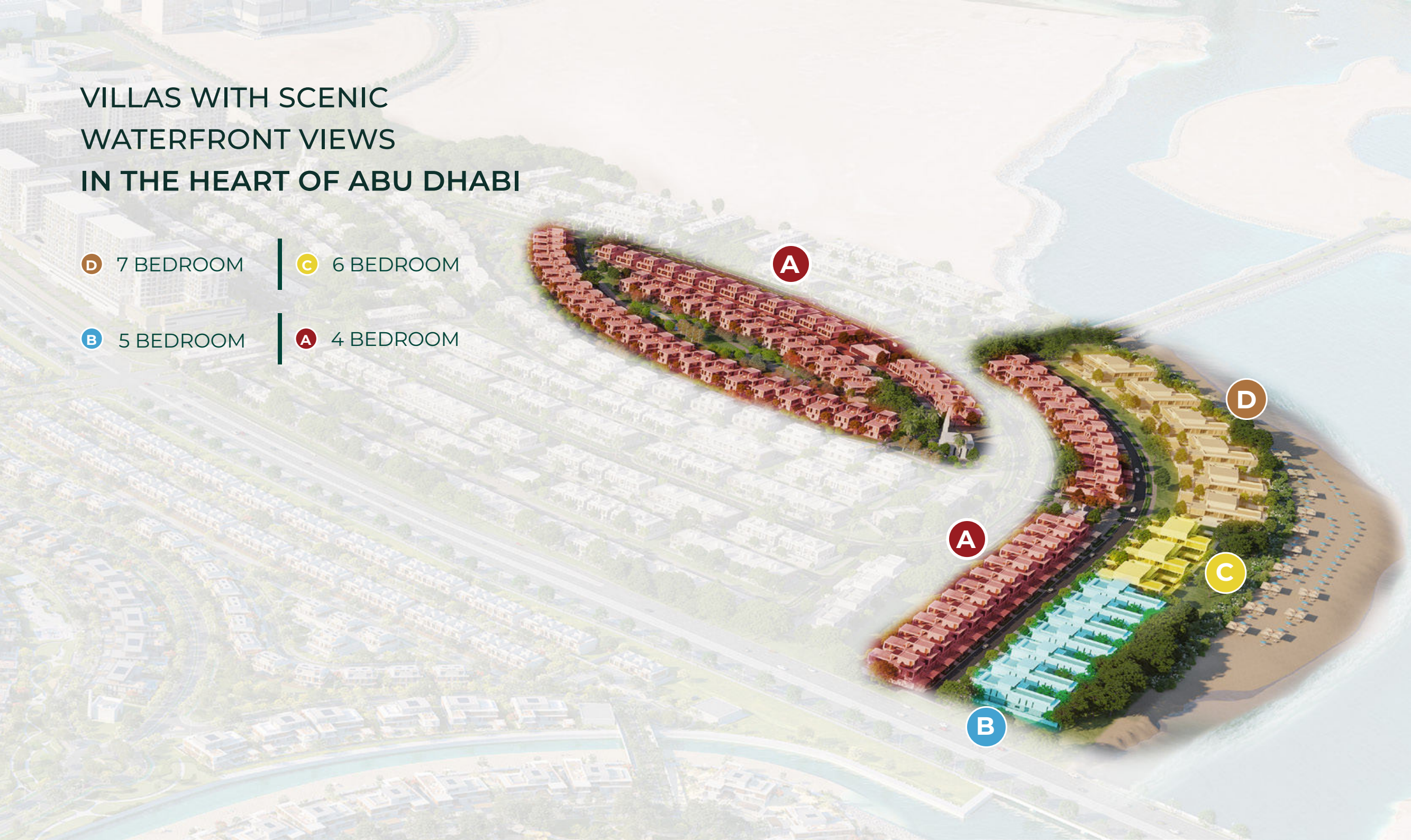
# VILLAS WITH SCENIC WATERFRONT VIEWS IN THE HEART OF ABU DHABI

**D** 7 BEDROOM

**C** 6 BEDROOM

**B** 5 BEDROOM

**A** 4 BEDROOM





# 7 BEDROOM VILLA

MINIMAL DESIGN





A PLACE, WHICH BRINGS ALL  
YOUR DREAMS TOGETHER





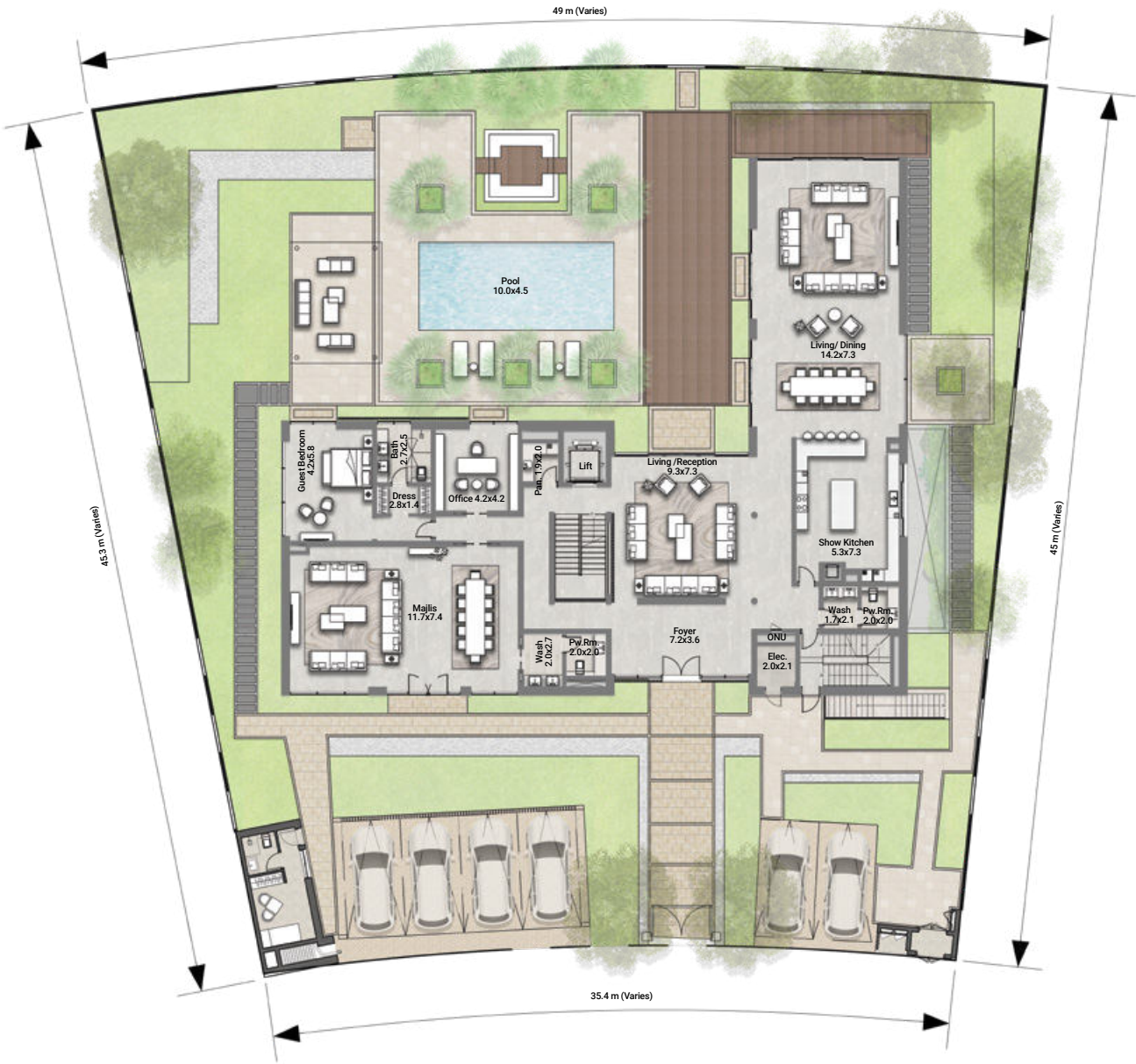




7 BEDROOM VILLA  
MINIMAL DESIGN

NO. OF BEDROOMS	07
FLOOR CONFIGURATION	B+G+1+Roof
TOTAL SALEABLE AREA	17,435 sqft
PLOT SIZE	20,082 sqft*

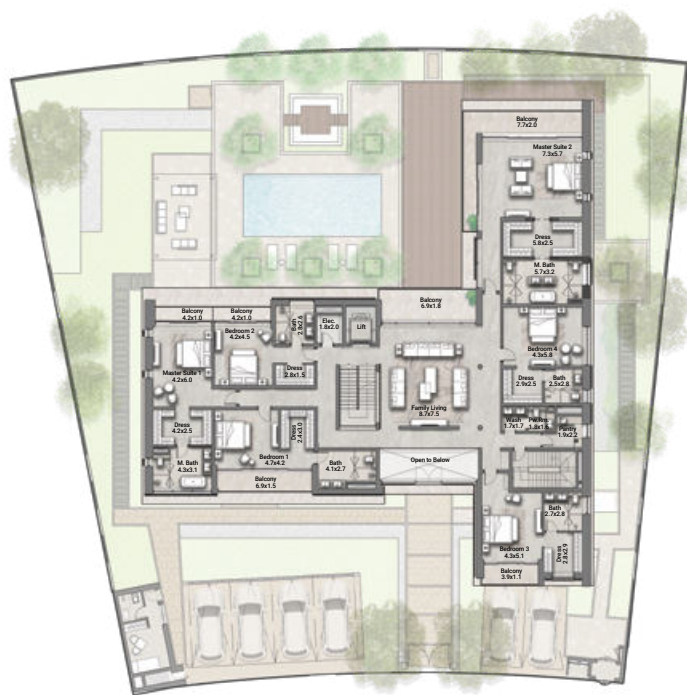
\*Starting from



GROUND FLOOR

All materials, dimensions, and drawings are approximate only, including actual areas. / Information is subject to change at developer's discretion, without notice, and developer reserves the right to make revisions without liability. / All images used are for illustrative purposes only and do not represent the actual size, features, specifications, fittings, and furnishings.

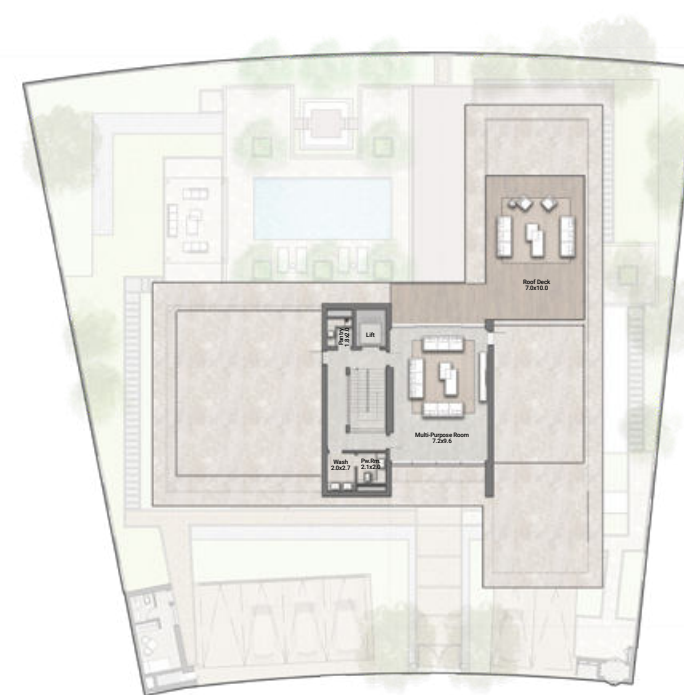




FIRST FLOOR



BASEMENT



ROOF FLOOR

All materials, dimensions, and drawings are approximate only, including actual areas. / Information is subject to change at developer's discretion, without notice, and developer reserves the right to make revisions without liability. / All images used are for illustrative purposes only and do not represent the actual size, features, specifications, fittings, and furnishings.



# 6 BEDROOM VILLA

MINIMAL DESIGN





SERENITY LIVING  
IN THE HEART OF THE CAPITAL





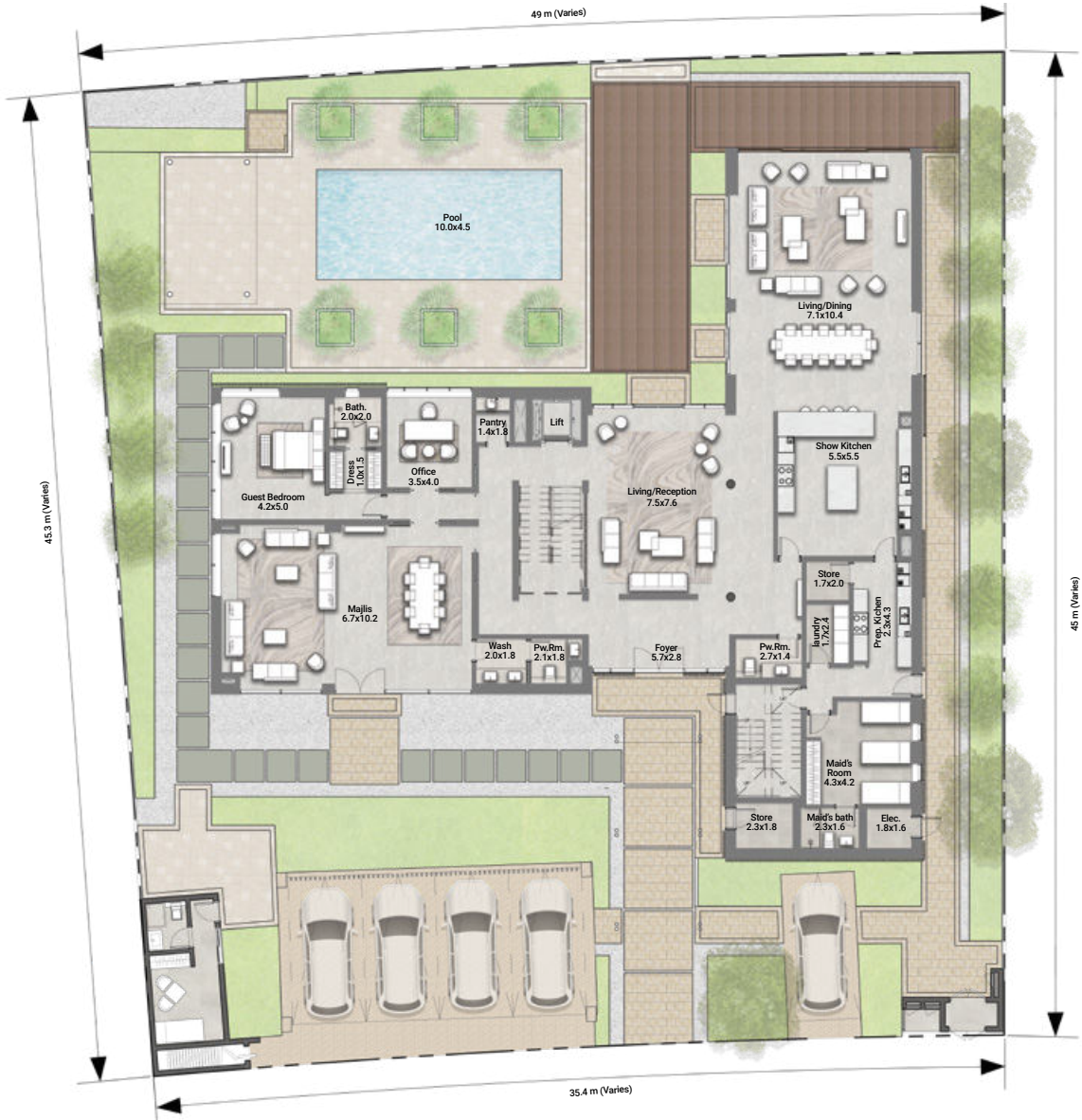




6 BEDROOM VILLA  
MINIMAL DESIGN

NO. OF BEDROOMS	06
FLOOR CONFIGURATION	G+1+Roof
TOTAL SALEABLE AREA	13,108 sqft
PLOT SIZE	17,480 sqft*

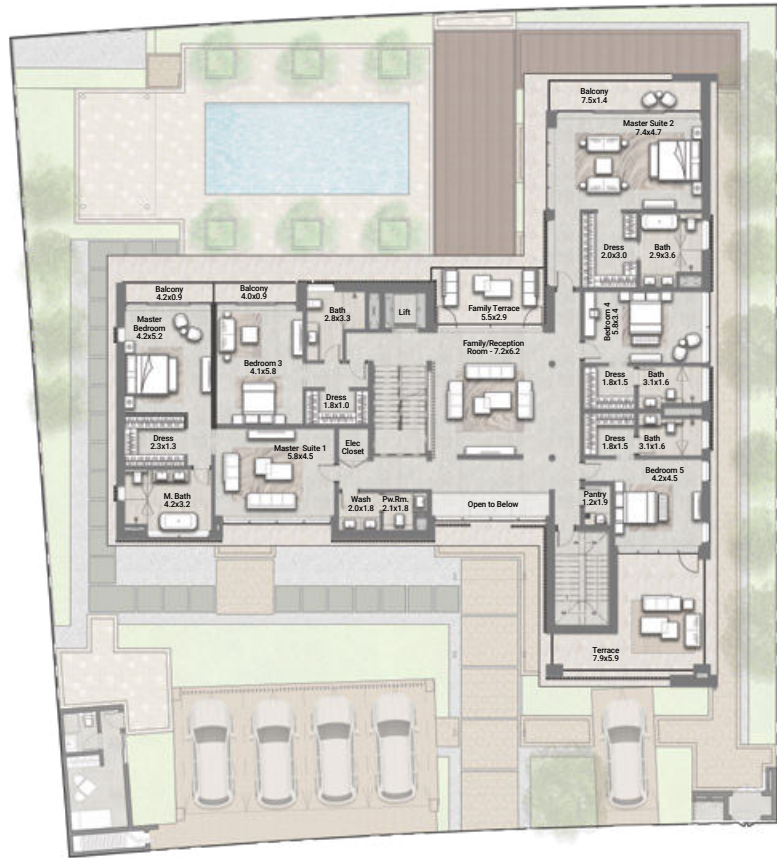
\*Starting from



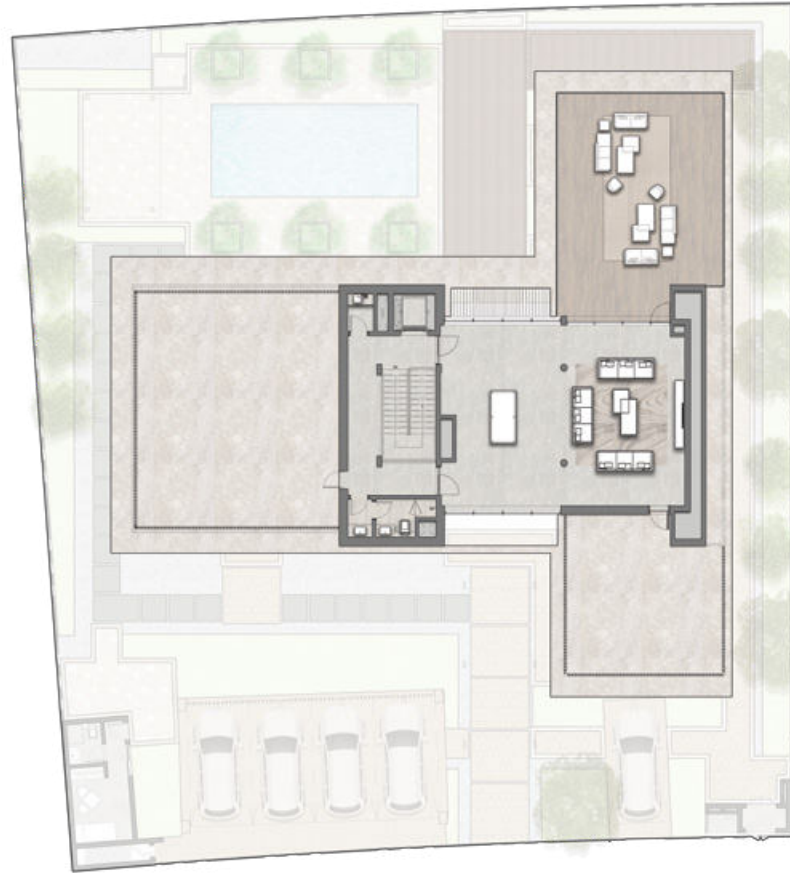
GROUND FLOOR

All materials, dimensions, and drawings are approximate only, including actual areas. / Information is subject to change at developer's discretion, without notice, and developer reserves the right to make revisions without liability. / All images used are for illustrative purposes only and do not represent the actual size, features, specifications, fittings, and furnishings.





FIRST FLOOR



ROOF FLOOR

All materials, dimensions, and drawings are approximate only, including actual areas. / Information is subject to change at developer's discretion, without notice, and developer reserves the right to make revisions without liability. / All images used are for illustrative purposes only and do not represent the actual size, features, specifications, fittings, and furnishings.



# 5 BEDROOM VILLA

MINIMAL DESIGN





A VIEW OVERLOOKING THE POOL  
AND THE PARK





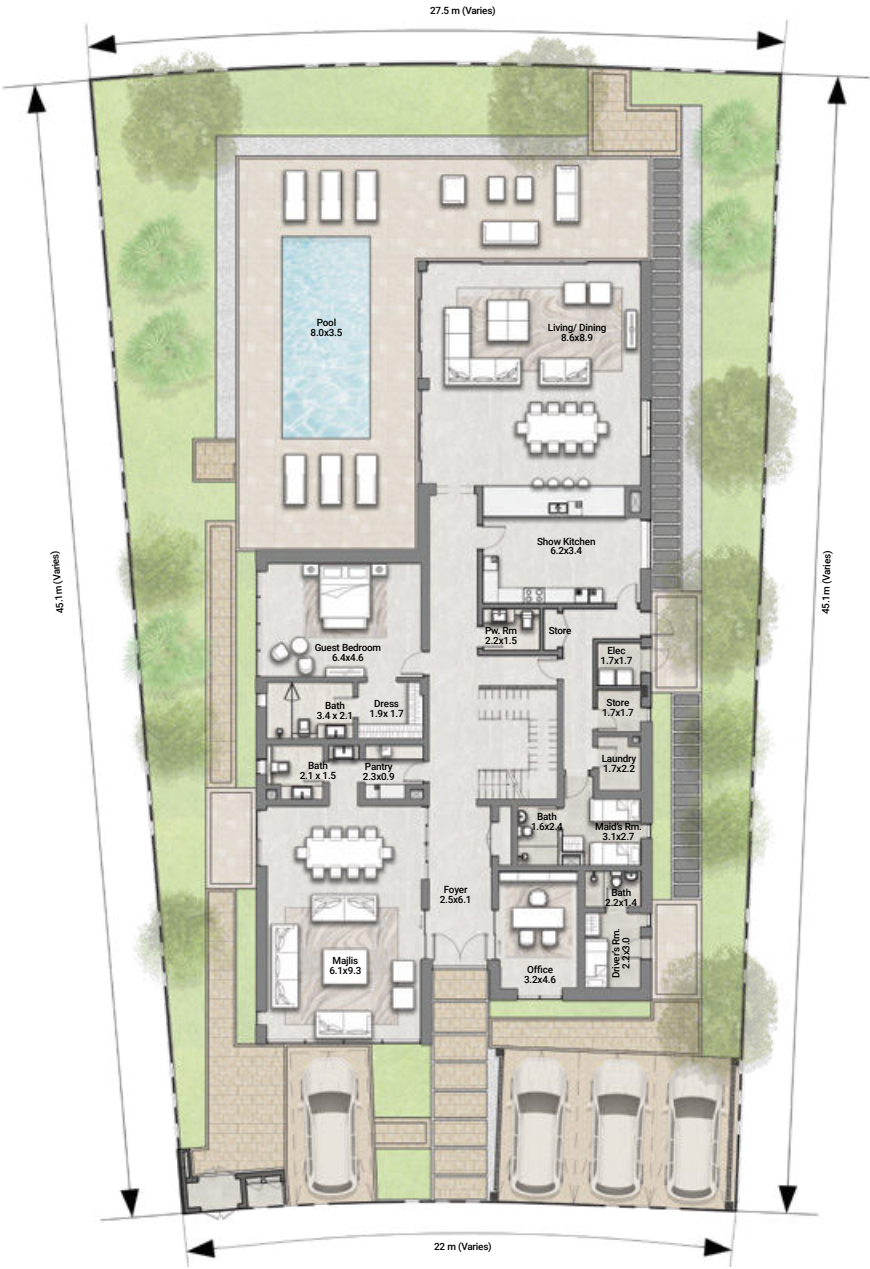




5 BEDROOM VILLA  
MINIMAL DESIGN

NO. OF BEDROOMS	05
FLOOR CONFIGURATION	G+1+Roof
TOTAL SALEABLE AREA	10,487 sqft
PLOT SIZE	11,625 sqft*

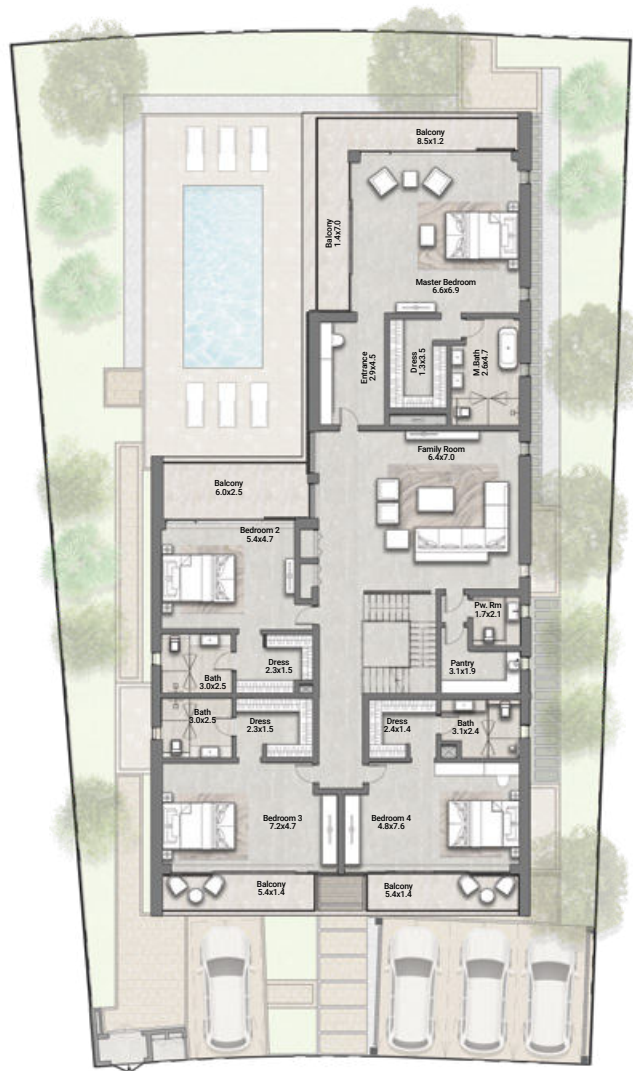
\*Starting from



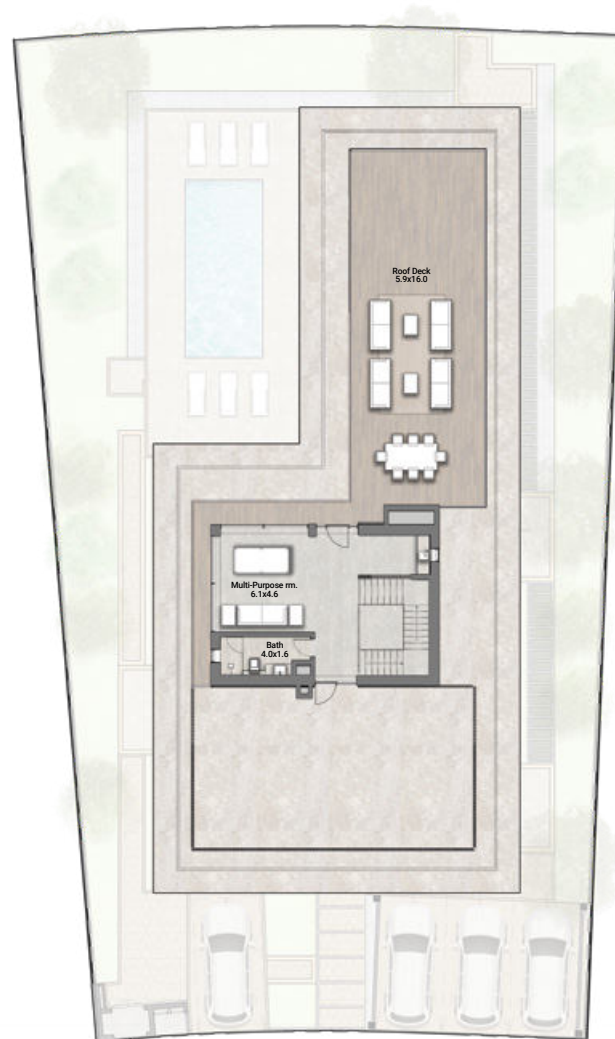
GROUND FLOOR

All materials, dimensions, and drawings are approximate only, including actual areas. / Information is subject to change at developer's discretion, without notice, and developer reserves the right to make revisions without liability. / All images used are for illustrative purposes only and do not represent the actual size, features, specifications, fittings, and furnishings.





FIRST FLOOR



ROOF FLOOR

All materials, dimensions, and drawings are approximate only, including actual areas. / Information is subject to change at developer's discretion, without notice, and developer reserves the right to make revisions without liability. / All images used are for illustrative purposes only and do not represent the actual size, features, specifications, fittings, and furnishings.



A flowing red fabric, possibly silk or satin, is draped across the frame. The fabric has deep, natural-looking folds and highlights, giving it a sense of movement and texture. It is set against a solid, dark green background that provides a rich contrast to the vibrant red of the fabric. The lighting is soft, emphasizing the smooth surface of the material.

# DESIGNS THAT MAKE YOU FEEL LIKE ROYALTY

INTERIORS FOR 7,6,5  
BEDROOM VILLAS



COMES WITH THE FINEST LEVEL OF  
DESIGN AND SUPERB FLOW





## BRIGHT AND WARM LIVING ROOM





ENDURING VALUE AND TIMELESS SPACES

















# 4 BEDROOM VILLA

MINIMAL DESIGN





YOUR BEST LIFE BEGINS WITH  
A HOME THAT INSPIRES YOU







UNWIND IN PEACEFUL SURROUNDINGS WITH  
TRANQUIL COURTYARD & PRIVATE SWIMMING POOL



ELEVATE YOUR STYLE WITH OUR EXQUISITELY  
DESIGNED AND EFFORTLESSLY FLOWING LIVING SPACE









A modern, open-plan living and dining area. The kitchen features dark cabinetry and a marble countertop. The dining area has a dark table and green upholstered chairs. The living area has a large white sofa, a coffee table, and a rug. Large windows provide a view of the garden and a swimming pool.

EMBRACE THE BEST IN COMFORT AND EASE  
WITH OUR LARGE SPACES







4 BEDROOM VILLA  
MINIMAL DESIGN

NO. OF BEDROOMS	04
FLOOR CONFIGURATION	G+1+Roof
TOTAL SALEABLE AREA	6,036 sqft
PLOT SIZE	6,394 sqft*

\*Starting from



GROUND FLOOR

All materials, dimensions, and drawings are approximate only, including actual areas. / Information is subject to change at developer's discretion, without notice, and developer reserves the right to make revisions without liability. / All images used are for illustrative purposes only and do not represent the actual size, features, specifications, fittings, and furnishings.





FIRST FLOOR



ROOF FLOOR

## FEATURES

- ✓ 4 EN SUITE BEDROOMS
- ✓ LIVING AND DINING
- ✓ MAJLIS
- ✓ KITCHEN
- ✓ FAMILY LOUNGE
- ✓ OFFICE/ STUDY LOUNGE (WITH ROOF DECK)
- ✓ DRIVER'S ROOM
- ✓ MAID'S ROOM
- ✓ STORE ROOM



An aerial architectural rendering of a villa development in Abu Dhabi. The development is shaped like a long, winding ribbon, highlighted in green and purple. It is surrounded by a dense grid of white residential buildings. To the right, there is a body of water with a curved shoreline and a small bridge. The development is divided into two main sections, A and B, indicated by circular markers. Section A is marked with green circles and contains green-roofed villas. Section B is marked with purple circles and contains purple-roofed villas. The background shows a mix of urban infrastructure, including roads and other buildings, under a clear sky.

## TWIN VILLAS AMIDST SERENE VIBES IN THE HEART OF ABU DHABI

**A** 4 BEDROOM TWIN VILLAS  
CHIC DESIGN

**B** 4 BEDROOM TWIN VILLAS  
MINIMAL DESIGN



# 4 BEDROOM TWIN VILLAS

MINIMAL DESIGN







STEP INTO A VISION OF INDIVIDUALIZED LUXURY AND  
SOPHISTICATED LUSH INTERIORS



# 4 BEDROOM TWIN VILLAS

CHIC DESIGN







THE EPITOME OF COMFORTABLE LIVING



4 BEDROOM TWIN VILLAS  
MINIMAL & CHIC DESIGNS

NO. OF BEDROOMS	04 + (OFFICE+FAMILY LOUNGE)
FLOOR CONFIGURATION	G+1+Roof
TOTAL SALEABLE AREA	3,887 sqft
PLOT SIZE	3,251 sqft*

\*Starting from

- CHIC DESIGN
- MINIMAL DESIGN



GROUND FLOOR

All materials, dimensions, and drawings are approximate only, including actual areas. / Information is subject to change at developer's discretion, without notice, and developer reserves the right to make revisions without liability. / All images used are for illustrative purposes only and do not represent the actual size, features, specifications, fittings, and furnishings.





FIRST FLOOR



ROOF FLOOR

## FEATURES

- ✓ 4 EN-SUITE BEDROOMS
- ✓ FAMILY LOUNGE
- ✓ STUDY ROOM/ OFFICE
- ✓ MAID'S ROOM
- ✓ STORE ROOM
- ✓ ROOF TERRACE
- ✓ LIVING & DINING
- ✓ SEMI CLOSED KITCHEN
- ✓ OUTDOOR GARDEN AREA
- ✓ 3 PARKINGS





## TOWNHOUSES AMIDST SERENE VIBES IN THE HEART OF ABU DHABI

**A** 3 BEDROOM TOWNHOUSES  
MINIMAL DESIGN

**B** 3 BEDROOM TOWNHOUSES  
CHIC DESIGN



# 3 BEDROOM TOWNHOUSE

MINIMAL DESIGN









# 3 BEDROOM TOWNHOUSES

CHIC DESIGN









# 3 BEDROOM TOWNHOUSES

## MID-UNIT | TYPE RM

NO. OF BEDROOMS	03 + (FAMILY LOUNGE)
FLOOR CONFIGURATION	G+1
TOTAL SALEABLE AREA	2,377 sqft
PLOT SIZE	2,120 sqft*

\*Starting from

- MINIMAL DESIGN
- CHIC DESIGN



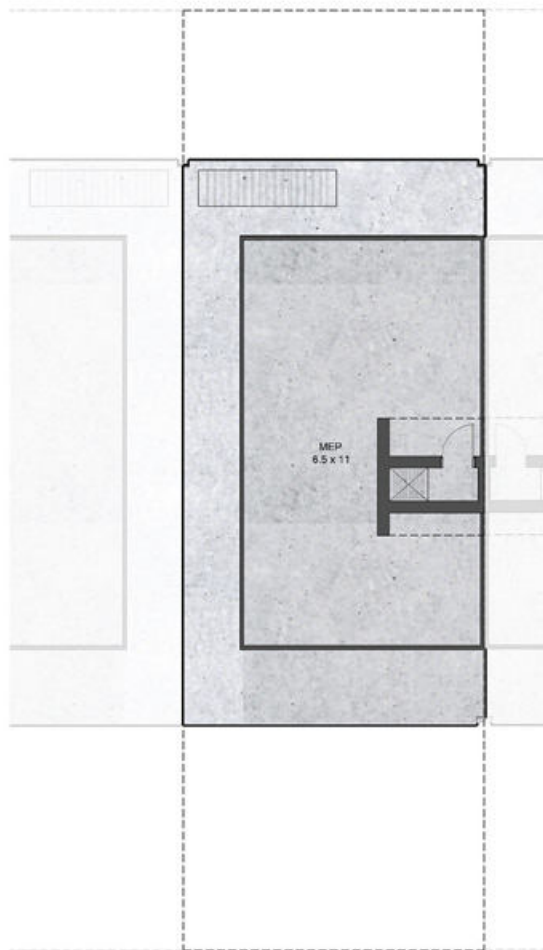
GROUND FLOOR

All materials, dimensions, and drawings are approximate only, including actual areas. / Information is subject to change at developer's discretion, without notice, and developer reserves the right to make revisions without liability. / All images used are for illustrative purposes only and do not represent the actual size, features, specifications, fittings, and furnishings.





FIRST FLOOR



ROOF FLOOR

## FEATURES

- ✓ 3 EN-SUITE BEDROOMS
- ✓ FAMILY LOUNGE
- ✓ MAID'S ROOM
- ✓ STORE ROOM
- ✓ LIVING & DINING
- ✓ POWDER ROOM
- ✓ SEMI CLOSED KITCHEN
- ✓ OUTDOOR GARDEN
- ✓ 2 PARKINGS



3 BEDROOM TOWNHOUSES  
CORNER-UNIT | TYPE RC

NO. OF BEDROOMS	03 + (FAMILY LOUNGE)
FLOOR CONFIGURATION	G+1
TOTAL SALEABLE AREA	2,377 sqft
PLOT SIZE	2,772 sqft*

\*Starting from

- MINIMAL DESIGN
- CHIC DESIGN



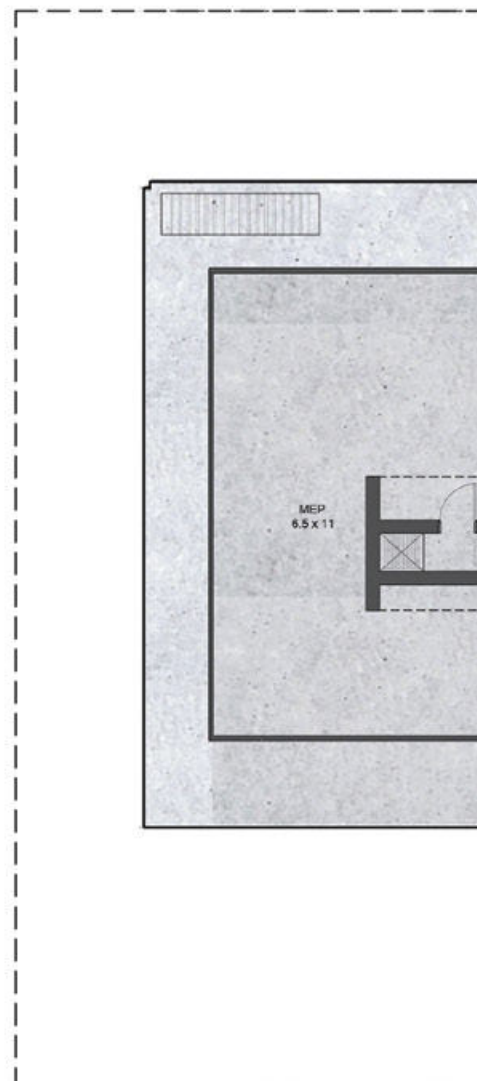
GROUND FLOOR

All materials, dimensions, and drawings are approximate only, including actual areas. / Information is subject to change at developer's discretion, without notice, and developer reserves the right to make revisions without liability. / All images used are for illustrative purposes only and do not represent the actual size, features, specifications, fittings, and furnishings.





FIRST FLOOR



ROOF FLOOR

## FEATURES

- ✓ 3 EN-SUITE BEDROOMS
- ✓ FAMILY LOUNGE
- ✓ MAID'S ROOM
- ✓ STORE ROOM
- ✓ LIVING & DINING
- ✓ POWDER ROOM
- ✓ SEMI CLOSED KITCHEN
- ✓ OUTDOOR GARDEN
- ✓ 2 PARKINGS



A flowing red fabric, possibly silk or satin, is draped across the frame. It has a rich, deep red color and a smooth, reflective texture. The fabric is gathered in some places, creating deep folds and shadows, while in other places it flows out, catching the light. The background is a solid, dark green color, which provides a strong contrast to the red fabric. The overall composition is elegant and sophisticated.

# DESIGNS THAT INSPIRE YOU

INTERIORS FOR 3 & 4 BEDROOM  
TOWNHOUSES AND TWIN VILLAS



IMPRESS YOUR FAMILY AND FRIENDS  
WITH SPACIOUSNESS









A SPACE THAT OFFERS A FEELING OF  
PEACE AND CONVENIENCE





CREATING SPACES THAT ARE BOTH  
BEAUTIFUL AND FUNCTIONAL





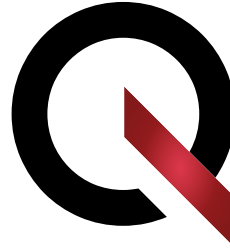




An aerial photograph of a modern residential development. The image shows several multi-story apartment buildings with light-colored facades and large glass windows. The buildings are interspersed with lush greenery, including palm trees and other tropical plants. In the background, a blue ocean is visible under a clear sky with some light clouds. The overall scene is bright and sunny, suggesting a warm climate. The text is overlaid in the center of the image, in a white, sans-serif font.

BE PART OF OUR EXCEPTIONAL COMMUNITY  
AND BOOK YOUR DREAM HOME IN THE HEART OF THE CAPITAL





---

**Q Properties** is an integrated part of Q Holding, and aspires to be the leading real estate & high quality project developer & asset management company based in the Emirate of Abu Dhabi. It has a portfolio that delivers a diverse range of luxury residential, commercial and leisure properties across the region, setting new standards for design and iconic quality lifestyle within its communities.

**Q Properties** injects creativity and continuous innovation into its quality projects in order to provide high-end and distinguished residential and commercial properties that meet the diverse tastes and needs of its clients and become prominent landmarks of the city. We provide unique destinations to form thriving integrated communities supporting an exceptional lifestyle. Focusing on environmental sustainability, Q Properties encourages the implementation of green initiatives through applying solutions that improve our clients' quality of life and wellbeing, ultimately leading to personal fulfilment.

**Q Properties** strives to create sustainable growth for all its stakeholders and contributes to economic development through facilitating investment strategies and partnerships that support its future plans to become a leading developer in the field of real estate investment.

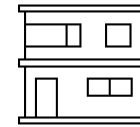
---



80% of Reem Island Land  
(Master Developer)



+15 Towers & Buildings in  
Abu Dhabi City and Reem Island



+5000 Villas in Al Ain City





**800-[7336 4457]**

[www.reemhills.com](http://www.reemhills.com)